



Treasure Valley Classical Academy (TVCA) is an open enrollment, tuition-free, **public charter school** in Fruitland, Idaho. All Treasure Valley students are eligible to attend, with seats filled through a lottery system.

TVCA's **mission** is to train the minds and improve the hearts of students through a classical, content-rich curriculum that emphasizes virtuous living, traditional learning, and civic responsibility.

TVCA's **vision** is to form future citizens who uphold the ideals of our country's founding and promote a continuation of our American experiment—through a classical, great books curriculum designed to engage the student in the highest matters and the deepest questions of truth, justice, virtue, and beauty.

TVCA is affiliated with the Hillsdale College **Barney Charter School Initiative** network.

Growing a Classic: The Plan

TVCA's ***Growing a Classic*** capital campaign will help fund the facilities necessary to serve students from kindergarten through 12th grade.

The school opened its doors to students in grades K-6 in August of 2019 with just over 300 students. For the current academic year, TVCA is serving 420 students in grades K-7. By the time TVCA completes its growth phase, it will have 54 students per grade K-12, for a maximum of 702 students.

The school's current building is a renovated and upgraded historical school building in downtown Fruitland with a traditional look and feel. It houses grades K-5, an auditorium, a gymnasium, and a commercial-grade kitchen. Students in grades 6-7 are currently situated in a temporary facility.

As a public charter school, so-called "bell-to-bell" daily school operations are funded by revenue provided by the State of Idaho. However, when compared to other public schools, TVCA as a charter school does not receive comparable facility funding and is therefore at a distinct disadvantage. The ***Growing a Classic*** capital campaign will help bear the construction costs for the school's expansion.

Phase 1: Elementary School Playground and Temporary Classrooms for 6th and 7th Grade

This phase was required for campus and school operations for the 2020-2021 academic year and provided an elementary school playground and temporary classrooms for 6th and 7th graded. Phase 1 is now complete.

Playground

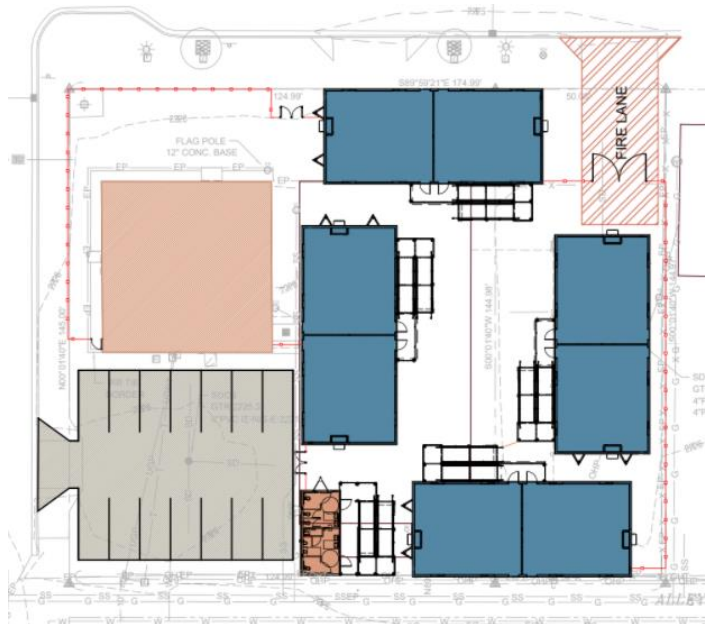
During our first school year, students were able to use the City of Fruitland public park for recess. However, a permanent recess solution was required. The new elementary playground is adjacent to the lower elementary classrooms in a convenient and secure location. It incorporates an innovative design that encourages imaginative play and physical development.

Temporary Classrooms

In response to community demand for our educational model, TVCA expanded 5th and 6th grade to full size for the 2020-2021 academic year.¹ This added 108 students to our enrollment. Tenant improvements at the Fruitland Electric site now provide temporary classrooms for 6th and 7th grade students for the 2020-2021 school year.

Phase 2: Modular Expansion (Grades 8-11)

To meet enrollment requirements, TVCA will plan to place four double classroom portables and a restroom unit on the 424 SW 3rd property (see image below). This expansion will accommodate grades 8th through 11th. The portables will be available for the start of the 2021-2022 academic year and extend through the 2022-2023 academic year. This adds a projected enrollment of approximately 200 students.



¹ TVCA's full growth enrollment model calls for 54 students per grade, with an initial start-up enrollment of 27 per grade in 5th and 6th grade. However, due to immediate community demand for full enrollment at those grade levels, TVCA petitioned and received approval from the Idaho Public Charter School Commission for an early expansion to full size in those grades.

Phase 3: Upper School Building Completion (Grades 6-12)

The new building will incorporate the following design components: 2 regular classrooms for 6th grade, 16 regular classrooms for 7-12th grade, 2 music rooms, 2 art rooms, a high-school science lab, a warming kitchen, a faculty resource room, a faculty lounge, a nurse's room with adjoining restroom, adequate facility space for Student Services (Special Education), and administrative offices. Additionally, the facility will provide an indoor-outdoor transition space that will function as the "upper school commons" for congregant events and dining/lunch space. Regular classrooms will be sized at approximately 700 square feet.

TVCA has chosen Bouma USA, a design-build firm. They are mission aligned and have built many charter schools throughout the nation, including in Idaho. Bouma will deliver a 32,000-35,000 square foot building at a cost not to exceed \$8M dollars to be completed in time for the 2023-2024 school year. TVCA leadership will be pursuing USDA financing. The design and appearance of the new building is intended to match and extend the historic architecture of our current school building, such as the concept rendering depicted below.

This phase of our expansion is essential to our growth to become a K-12 school. It will provide an upper school building which will house grades 6-12.



Growing a Classic: Capital Need

Total campaign fundraising necessary for these capital improvements is as follows:

By June 30th, 2021	\$ 500,000
By June 30th, 2022	\$ 400,000
By June 30th, 2023	\$ 400,000
By June 30th, 2024	\$ 300,000
<u>Total Amount:</u>	<u>\$1,600,000</u>

Growing a Classic: Spread Seeds | Establish Roots | Tend Growth

Spread Seeds

You can help spread the word about Treasure Valley Classical Academy's mission and vision in two immediate ways:

1. Host a virtual event where our Board Members or administration may present the school's mission, vision, and traditional model. Encourage your friends, colleagues and organization members to join you in supporting Treasure Valley Classical Academy. Please email capitalcampaign@tvacademy.org to schedule your virtual event.
2. Attend the *Growing a Classic* capital campaign's video premiere, ***Forming Young Hearts, Training Young Minds***, on **April 22, 2021 at 4:30pm**. Please invite your family, friends, and colleagues.

Growing a Classic: Spread Seeds | Establish Roots | Tend Growth

Spread Seeds

You can help spread the word about Treasure Valley Classical Academy's mission and vision in two immediate ways:

1. Host a virtual event where our Board Members or administration may present the school's mission, vision, and traditional model. Encourage your friends, colleagues and organization members to join you in supporting Treasure Valley Classical Academy. Please email capitalcampaign@tvacademy.org to schedule your virtual event.
2. Attend the ***Growing a Classic*** capital campaign's video premiere, *Forming Young Hearts, Training Young Minds*, on April 22, 2021 at 4:30pm. Please invite your family, friends, and colleagues.

Establish Roots

1. Please consider a generous donation to the Growing a Classic Campaign. Your investment in the young minds of students is imperative to our mission. TVCA provides traditional learning for the student while instilling truth, beauty, and goodness in young hearts to produce a citizenry worthy of our American Experiment.
2. Please encourage others who would be interested in supporting TVCA to consider legacy giving with stocks etc. from their estate. Please email capitalcampaign@tvacademy.org to request details for this and other campaign events.

Tend Growth

Determine a gift or total pledge amount you are willing to give between now and 2024. Gifts may be contributed in one or multiple payments. All donations are tax deductible, during the year they are paid.² Please keep in mind that no donation is too small—or too large when considering our mission.

Recurring Contribution Amounts

Total Pledge Amount	Annual Gift (2020-2024)	Monthly (24 months)	Monthly (36 months)	Monthly (48 months)
\$1,500	\$375	\$63	\$42	\$31
\$2,500	\$625	\$104	\$70	\$52
\$3,000	\$750	\$125	\$84	\$63
\$6,000	\$1,500	\$250	\$167	\$126
\$9,000	\$2,250	\$375	\$250	\$188
\$12,000	\$3,000	\$500	\$334	\$250
\$15,000	\$3,750	\$625	\$417	\$313
\$30,000	\$7,500	\$1,250	\$834	\$625
\$50,000	\$12,500	\$2,083	\$1,389	\$1,042
\$75,000	\$18,750	\$3,125	\$2,084	\$1,563
\$100,000	\$25,000	\$4,167	\$2,778	\$2,083

Growing a Classic: Campaign Leadership

Treasure Valley Classical Academy Board of Directors

Ronda Baines*	rbaines@tvacademy.org
Mr. Travis Evenden*	tevenden@tvacademy.org
Mrs. Ann Frei	afrei@tvacademy.org
Mr. Kevin Fugate	kfugate@tvacademy.org
Mr. Marv Lasnick	mlasnick@tvacademy.org
Dr. Emma Nelson*	enelson@tvacademy.org
Mrs. Julie Taylor	jtaylor@tvacademy.org

* Capital Campaign Committee

Please contact any member of our board with questions regarding the capital campaign.

² Treasure Valley Classical Academy is a publicly registered 501c-3 public charity. Donors can deduct contributions they make under IRC Section 170 and can also receive tax deductible bequests, devises, transfers, or gifts under Section 2055, 2106, or 2522.

Growing a Classic: Quick FAQs

Are gifts tax deductible?

Yes, TVCA is a non-profit 501(c)3 public charity. Donors can deduct contributions they make under IRC Section 170 and can also receive tax deductible bequests, devises, transfers, or gifts under Section 2055, 2106, or 2522. TVCA will provide tax receipts for all pledge payments.

How much does TVCA need to raise?

The goal for our capital campaign is \$1.6 Million

What kinds of payments are acceptable?

TVCA accepts cash, checks or credit card payments. We also accept stock or investment transfers or other bequests or gifts. Please contact a board member for details.

Who will benefit from a donation?

TVCA's students will directly benefit from all donations. More broadly, our local community will benefit in several ways: the availability of K-12 school choice for parents in Payette County and the lower Treasure Valley, the aesthetic beauty of our traditional campus in downtown Fruitland, and the impact of our citizen graduates.

May I include TVCA in my will or estate planning?

Yes, please consider our mission when planning your estate. Please contact us for details.



TREASURE VALLEY
CLASSICAL ACADEMY

A Classical Education for Modern Times